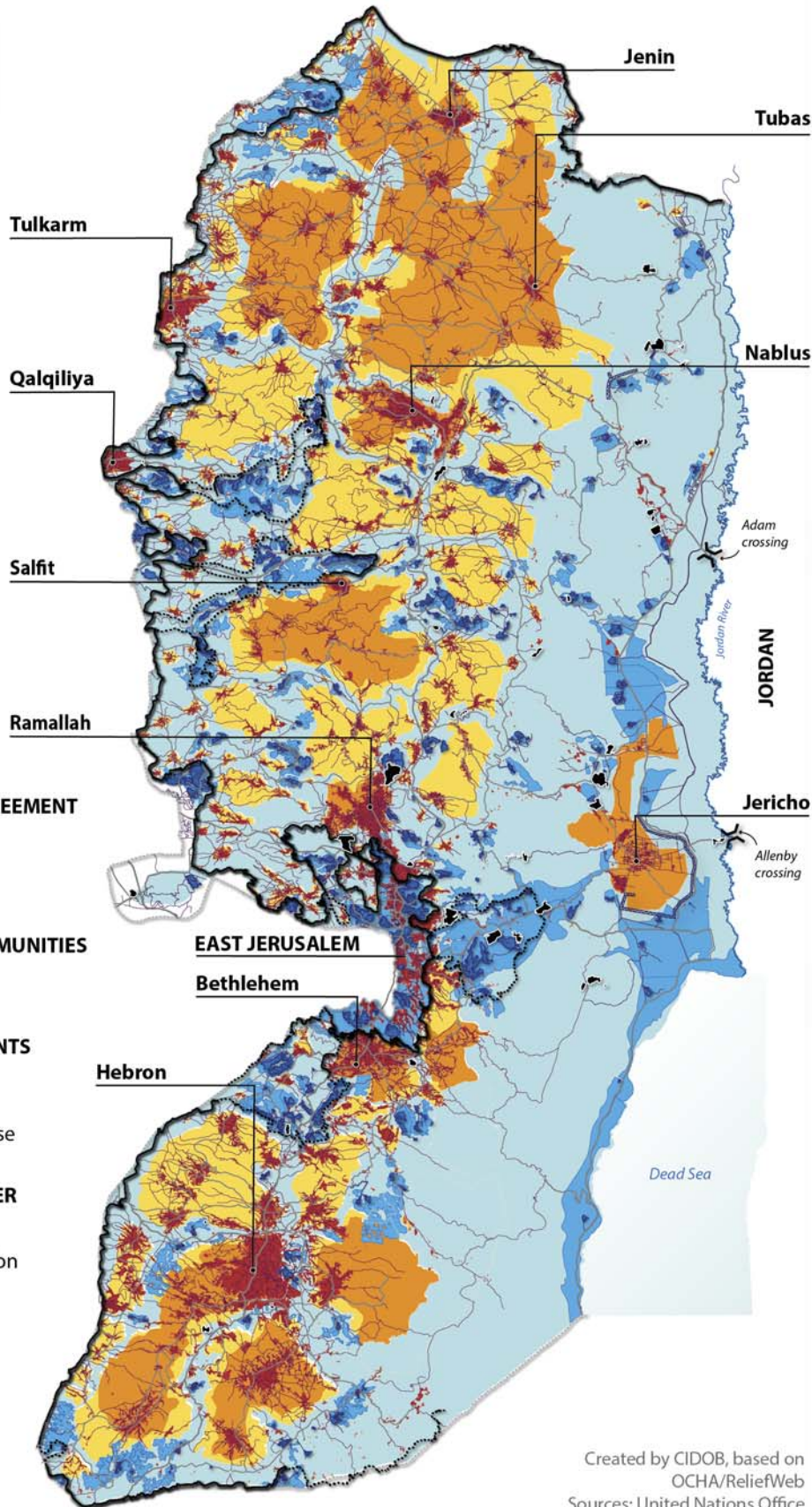


# WEST BANK: Israeli Strategy in the West Bank: Divide et Impera

The West Bank is a land-locked area sealed off by Israel to its north, south and west; and Jordan to the east. It was entirely occupied by Israel in 1967 (including East Jerusalem), with over 200 settlements illegal built today supporting a total Jewish population of over 600,000. Israel has further annexed thousands of hectares of Palestinian land to build houses, checkpoints, roadblocks, and Jewish only access roads to fragment Palestinian areas and to control it. Moreover, Israel's planned 712 km Israeli separation "Barrier"—85% of which constructed on occupied Palestinian land totaling nearly 10% of the West Bank—further fragments the West Bank, cuts off Palestinian communities from their farmlands, and severely curtails Palestinian freedom of movement and right to work, education and medical care. Overall, the West Bank now effectively comprises 165 non-contiguous and dis-connected areas, with the Palestinian Authority in control over about 18% (mainly the concentrated urban areas) and partially in a further 22% (rural areas). In total, Israeli settlements (and their regional councils) control 40% of the West Bank. The International Court of Justice has ruled the barrier unlawful; and a host of UN resolutions and overall body of humanitarian and occupation law have maintained the occupation of the West Bank and the building of settlements are illegal. The total unemployment rate in West Bank is nearly 20% , and for adults under 30 it is 40%.

2017



### OSLO INTERIM AGREEMENT

- Area A \*
- Area B \*
- Area C \*

### PALESTINIAN COMMUNITIES

- Built-up area

### ISRAELI SETTLEMENTS

- Built-up area
- Municipal area
- Israeli military base

### WEST BANK BARRIER

- Constructed
- Under construction or planned
- Trench
- Border crossing to Jordan
- Governorate capital

1947

Proposed borders under the UN Partition Plan



1948

Israel is formed



1967

After the Six-Day War Israel forces occupy the West Bank, Gaza, the Sinai Peninsula & Golan Heights



1982

Israel invades Souther Lebanon and will not withdraw until 2000



Created by CIDOB, based on OCHA/ReliefWeb Sources: United Nations Office for the Coordination of Humanitarian Affairs in the occupied Palestinian territory, "West Bank, Access Restrictions", January 2017.

\* Note: Israel has full military control over all Palestinian territories, while the PA has limited administrative authority over certain areas. Area A is under nominal Palestinian control. Area B is under nominal Palestinian civilian control but with formal joint Israeli-Palestinian security control. Area C is under full Israeli control with no Palestinian authority at all.